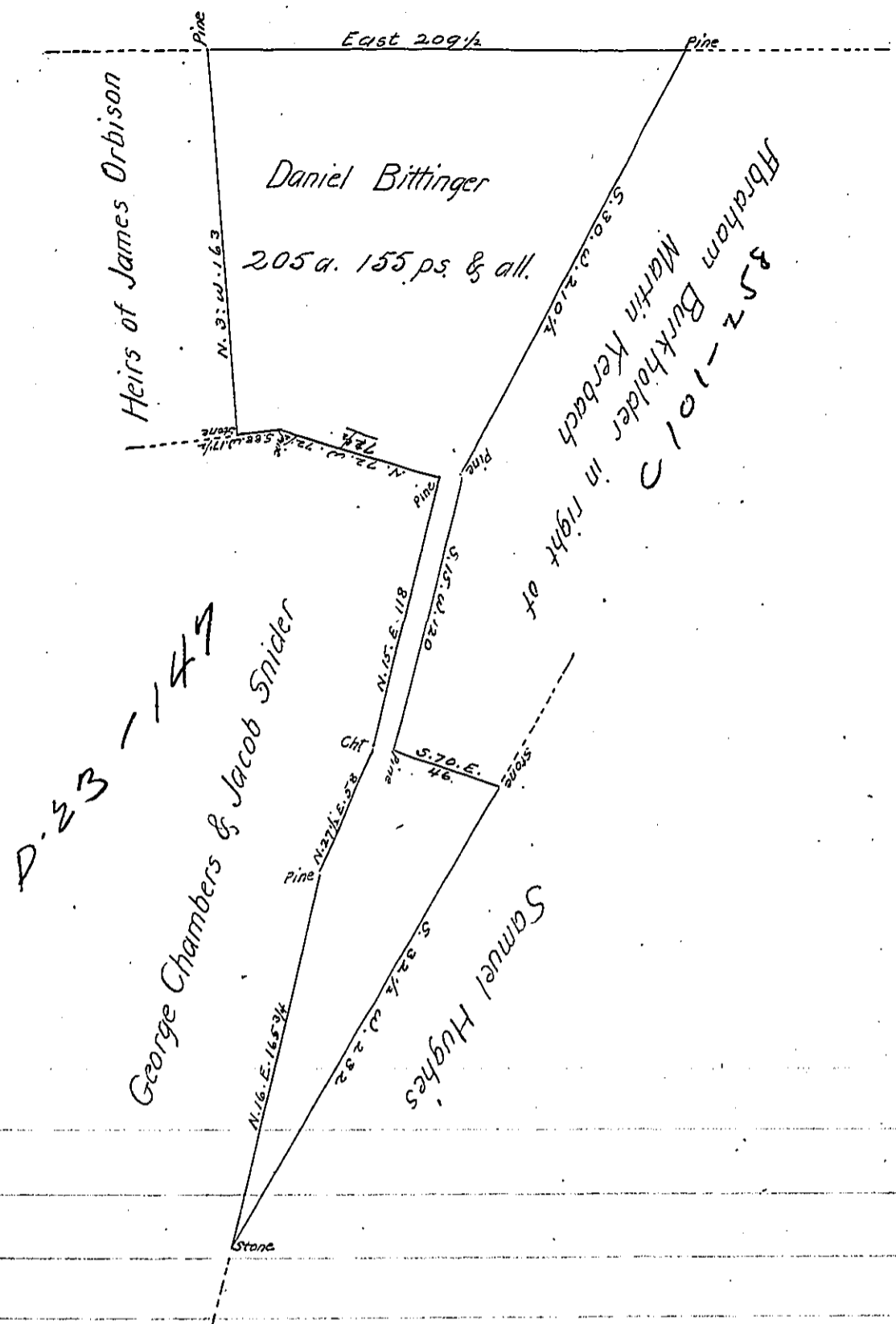


Heirs of James Orbison



Draught of a Tract of Land Situate in Guilford Township Franklin County, Containing Two hundred and five Acres, and one hundred and fifty five perches & allowance of Six pCt. for Roads Surveyed the 8th day of March 1816 in pursuance of a Warrant Granted Daniel Bittinger for 200a. Dated the 26th day of May 1815

Archd. Fleming D.S.

Richd. T. Leech Esqr.

Surveyor General

IN TESTIMONY that the above is a copy of the original remaining on file in the Department of Internal Affairs of Pennsylvania, made conformably to an Act of Assembly approved the 16th day of February, 1833, I have hereunto set my Hand and caused the Seal of said Department to be affixed at Harrisburg, this twentieth day of February 1904

*Geo. A. P. Beaver*  
Secretary of Internal Affairs.